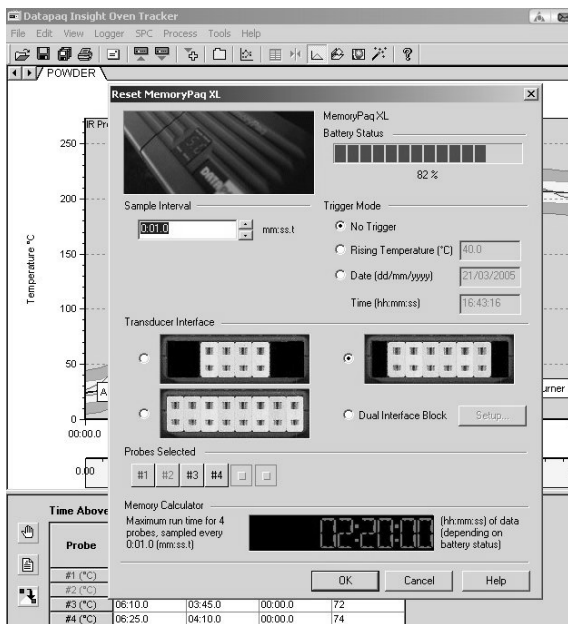


You may now reset the logger and download data from it in the usual manner, e.g. by selecting **Logger > Reset or Download** from the Insight menu bar.

For more information, and for troubleshooting communications problems, see the *Oven Tracker User Manual (issue 3 or later)*.



© Datapaq Ltd., Cambridge, UK 2005 All rights reserved

Datapaq Ltd. makes no representations or warranties of any kind whatsoever with respect to the contents hereof and specifically disclaims any implied warranties of merchantability or fitness for any particular purpose. Datapaq Ltd. shall not be liable for errors contained herein or for incidental or consequential damages in connection with the furnishing, performance or use of the Datapaq software, associated hardware or this material.

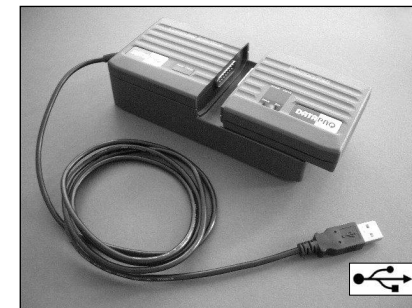
Datapaq Ltd. reserves the right to revise this publication from time to time and to make changes to the content hereof without obligation to notify any person of such revisions or changes.

User manuals are available in other languages. Contact Datapaq for details.

Europe & Asia
 Datapaq Ltd
 160 Cowley Road
 Cambridge CB4 0GU, UK
 Tel: +44-(0)1223-423141
 Fax: +44-(0)1223-423306
 sales@datapaq.co.uk

North & South America
 Datapaq Inc.
 187 Ballardvale Street
 Wilmington, MA 01887, USA
 Tel: +1-978-988 9000
 Fax: +1-978-988 0666
 sales@datapaq.com

XL Computer Interface, USB Version SETUP GUIDE

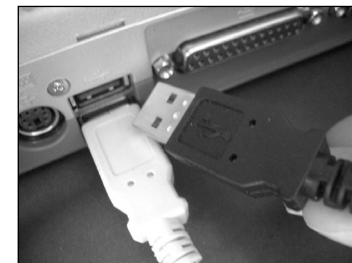


Installing USB Drivers

To enable communication with the XL logger's CI0040A USB Computer Interface, driver software must be installed on the PC. The PC must be running Windows 98 or later (but not Windows NT). Insight software v. 3.0 or later should be installed first, and then installation of the drivers can proceed. The whole process is as follows.

1. For most systems, installation will start automatically on placing the Insight CD in the drive. (If installation does not start, click the Windows Start button and select Run; browse to your CD drive, and run Setup.exe.)
2. Follow the on-screen instructions to install Insight. You will need your license number to hand, which is to be found on your license agreement, on the outside of the CD case and on the outside of the system packaging.
3. Once Insight is installed, and with the CD still in the PC, connect the Computer Interface to a USB port on the PC. The Found New Hardware Wizard will then run automatically (see p. 2).
4. Ask Windows to search for and/or install a suitable driver (the recommended option). If asked, choose to search on the CD drive.

When installing in Windows 2000 or Windows XP, ensure you are in Administrator mode.



It is strongly recommended to use the same USB port for the Computer Interface every time it is plugged in – otherwise, you will be prompted to install the drivers again and may be allocated a different COM port number.

- The driver file will be found and installed automatically. If Windows displays a message about digital signatures or Windows-logo testing, click the option to continue installation.

You may be prompted to install two drivers, and thus the process above may run twice.



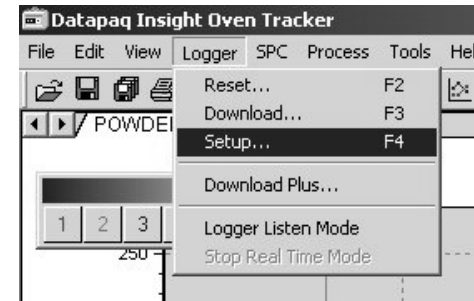
Driver installation with Windows 2000 is shown. The screens which appear may differ, depending on your system configuration, but the same information should be selected.

Communications Setup

If the logger is being connected to a PC for the first time, it is necessary to enable communication between them – i.e. to let Windows select the internal communication port to which the logger will be attached – as follows.



- Connect the charger to the Computer Interface (not necessary if the logger's batteries are known to have a good state of charge).
- Connect the Computer Interface to a free USB port on the PC; *this should be the same port that was used during driver installation.*



- After connecting to the USB port, plug the MemoryPaq into the interface. The red LED on the MemoryPaq should flash five times to confirm that the connection has been made.
- On the Insight software's menu bar, select **Logger > Setup** to open the Communications Setup dialog.

- Click **Detect** to auto-detect the communications port to which the logger is connected.
- Click **Test**. If the logger is detected, its type and the COM port to which it is connected are displayed.
- Click **OK**.

